

Need a Mortgage in principle
to make offers? Call us now
for quick assistance!
0121 775 0101

DM&Co.
SALES & LETTINGS



Do you need to sell?
Start your journey now!
Call us we can help.
0121 775 0101

DM&Co.
SALES & LETTINGS



SCAN FOR MORE INFO
SIZE - 1959 Sq Ft
TENURE - Freehold
COUNCIL TAX - Solihull Metropolitan Borough Council - G
BROADBAND - Upload Max 1800Mbps
Download Max 1000Mbps
MOBILE - O2
EPC - TBC
PARKING - For at least 4 Cars
FLOODRISK - Very Low
SERVICES - Mains
COVENANTS - N/A

Are you an investor
interested in expanding your
portfolio?

Call **0121 775 0101** to provide your
investment criteria for alerts.

WIDNEY MANOR ROAD

Solihull, B91

Nestled on the esteemed Widney Manor Road in Solihull, this charming detached family home, built in the 1930s, offers a delightful blend of traditional character and modern convenience. Spanning an impressive 1,956 square feet, the property boasts four well-proportioned bedrooms and a thoughtfully designed layout that caters to family living.

FEATURES

- Beautifully Presented Traditional Detached Family Home
- Formal Dining Room
- Bright Lounge Overlooking the Rear Garden
- Breakfast Kitchen with Appliances
- Versatile Inner Room
- Large Principal Bedroom
- Second Double Bedroom & Two Further Good Sized Bedrooms
- Modern Bathroom & Separate WC
- Private & Established Rear Garden with Open Views to Front
- Tudor Grange Academy Catchment
- Walking Distance to Solihull



SCAN TO **VIEW OUR**
WEEKLY FILMS &
SUBSCRIBE

Sneak Peeks

Every week, we unveil "Sneak Peeks," a feature showcasing exclusive properties before they hit Rightmove and other platforms.

The Landlord Club

Join our Landlord Club for weekly updates on legislation, market trends, and our Letting Director's 'Investment Pick of the Week' for optimal ROI.

HTSPMD

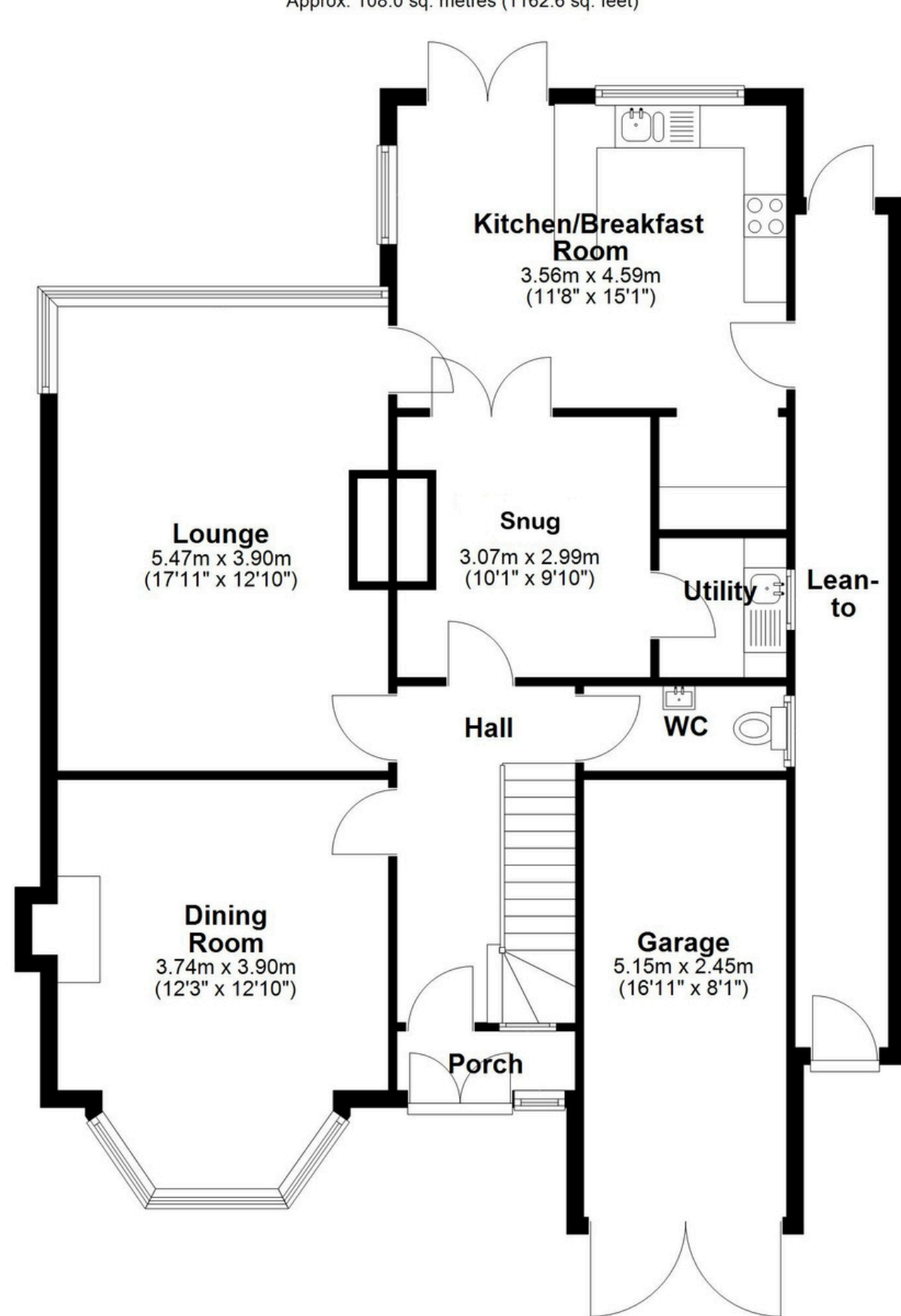
Tune into 'How's The Solihull Property Market Dom' weekly for a quick, insightful snapshot of the market.

The Mortgage Update

Get weekly insights and the best deals with our Mortgage Update, your shortcut to navigating the complex mortgage landscape confidently.

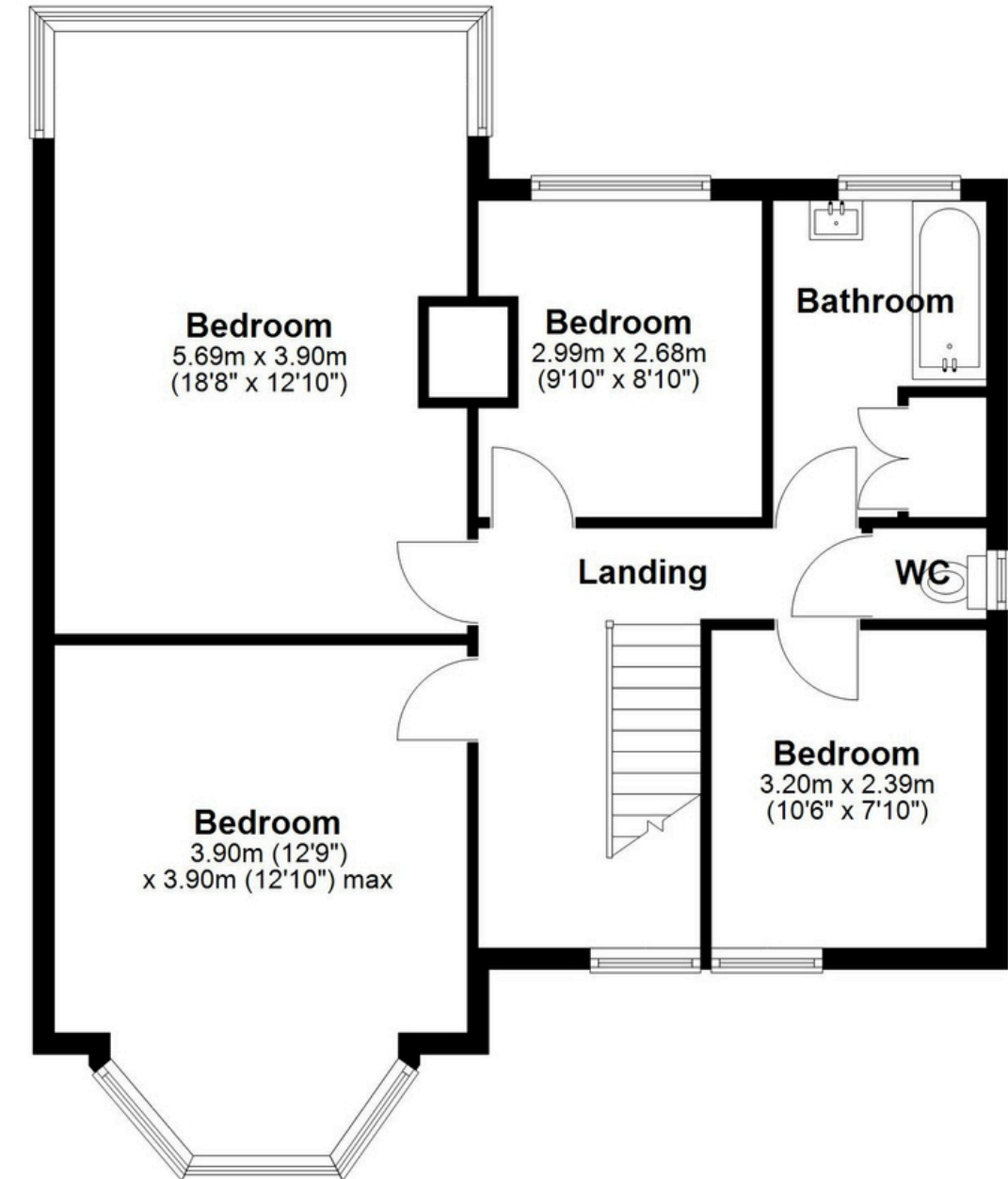
Ground Floor

Approx. 108.0 sq. metres (1162.6 sq. feet)



First Floor

Approx. 73.7 sq. metres (793.5 sq. feet)



Total area: approx. 181.7 sq. metres (1956.1 sq. feet)

This floor plan is for illustration purposes only, this is not intended to be a measured/scaled survey or comply with RICS guidelines. All measurements (including total floor area) openings, orientation and floor area are approximate. No details are guaranteed, they cannot be relied upon for any purpose and do not form part of any agreement. A party must rely upon its own inspection(s). No responsibility is taken for any error, omission, or mis-statement.

Plan produced using PlanUp.